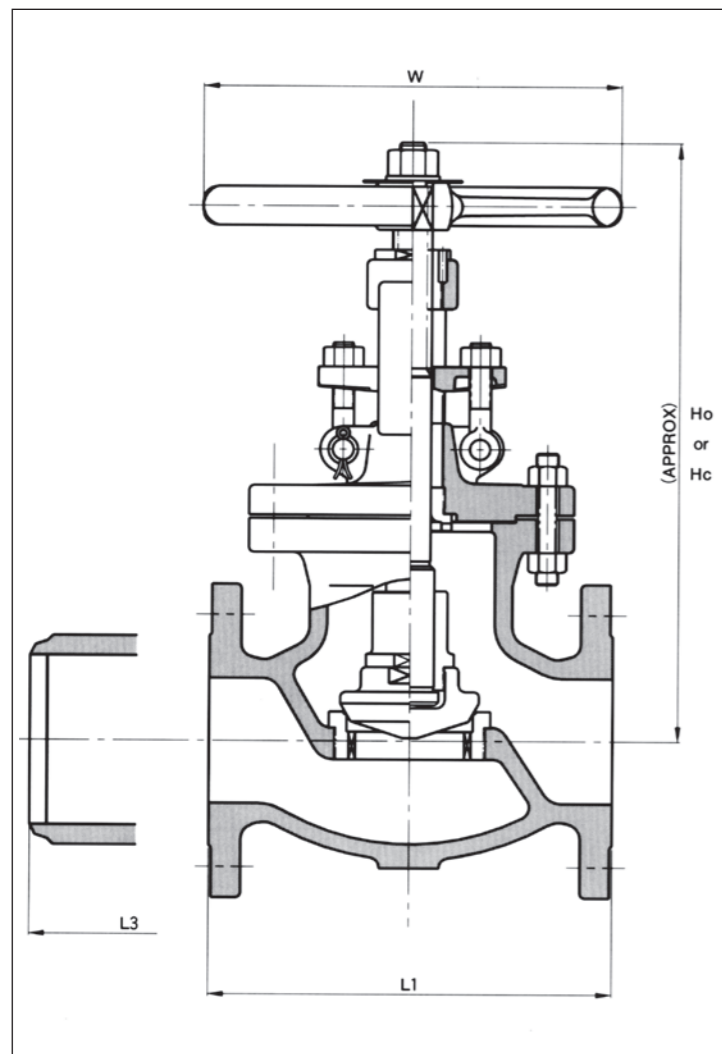


CAST STEEL GLOBE VALVES

ASME CLASS 150

SIZE 2" to 20"
Flanged and Butt weld Ends
Bolted Bonnet, O.S. & Y.
R.F. End Type. Fig. No. C1240
B.W. End Type. Fig. No. C1230



PRESSURE TEST: As per API 598

MATERIAL

NAME OF PART	ASTM	JIS
BODY	A216 WCB	SCPH2
BODY SEAT RING	* A105	* SFVC2A
DISC STEM RING	A276 420	SUS420J2
DISC	A276 420	SUS420J2
STEM	A182 F6a	SUS403
BONNET GASKET	SPIRAL WOUND GRAPHOIL	
BONNET	A216 WCB	SCPH2
BONNET BOLT	A193 B7	SNB7
BONNET BOLT NUT	A194 2H	S45C
BONNET BUSH	A276 420	SUS420J2
GLAND PACKING	FLEXIBLE GRAPHITE	
GLAND	A276 420	SUS420J2
GLAND FLANGE	A105	SFVC2A
GLAND EYE BOLT	A193 B7	SNB7
GL. EYE BOLT NUT	A194 2H	S45C
YOKE SLEEVE	A439 D2	FCDA NiCr
HAND WHEEL	A536	FCD450
LOCK NUT	A36	SS400
NAME PLATE	B209M	ALP

* BODY SEAT RING: STELLITE FACE
 * DISC: 12 INCH AND OVER ARE WCB WITH 13Cr FACE

Note: (1) Stem of valves 10 inch and over are non-rotating type

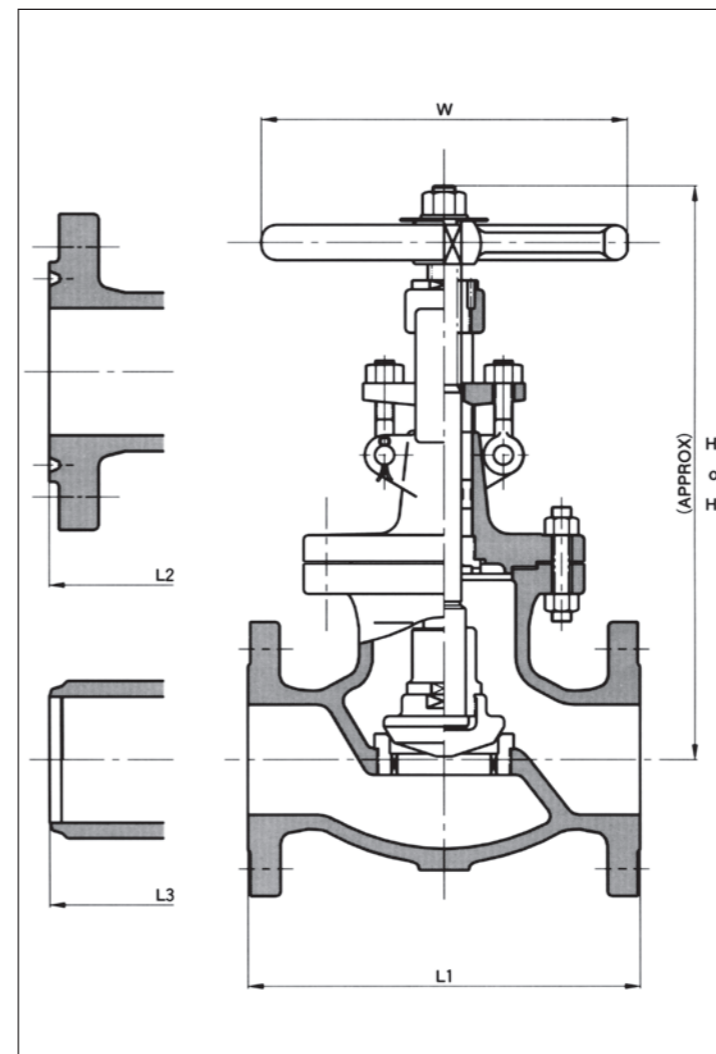
WEIGHT AND DIMENSIONS

Valve Size		2"	2½"	3"	4"	6"	8"	10"	12"	14"	16"	18"	20"
End to End (mm)	R.F. L1	203	216	241	292	406	495	622	698	787	914	978	978
	B.W. L3	203	216	241	292	406	495	622	698	787	914	978	978
Center to Top (mm)	Open Ho	338	347	388	424	485	598	698	837	1031	1121	1200	1250
	Close Hc	320	325	362	389	438	538	623	752	926	1101	1200	1250
Diam. of Handwheel (mm)	W	200	200	250	280	355	450	450	560	685	685	610	610
	R.F. B.W.	20.5	33.0	34.5	52	94	150	305	476	620	766	1000	1300
Weight Approx. (kg)	R.F. B.W.	19	30	33	49	90	173	275	430	560	690	690	1170

CAST STEEL GLOBE VALVES

ASME CLASS 300

SIZE 2" to 16"
Flanged and Butt weld Ends
Bolted Bonnet, O.S. & Y.
R.F. End Type. Fig. No. C1440
R.J. End Type. Fig. No. C1470
B.W. End Type. Fig. No. C1430



PRESSURE TEST: As per API 598

MATERIAL

NAME OF PART	ASTM	JIS
BODY	A216 WCB	SCPH2
BODY SEAT RING	* A105	* SFVC2A
DISC STEM RING	A276 420	SUS420J2
DISC	A276 420	SUS420J2
STEM	A182 F6a	SUS403
BONNET GASKET	SPIRAL WOUND GRAPHOIL	
BONNET	A216 WCB	SCPH2
BONNET BOLT	A193 B7	SNB7
BONNET BOLT NUT	A194 2H	S45C
BONNET BUSH	A276 420	SUS420J2
LANTERN RING	A276 420	SUS420J2
GLAND PACKING	FLEXIBLE GRAPHITE	
GLAND	A276 420	SUS420J2
GLAND FLANGE	A105	SFVC2A
GLAND EYE BOLT	A193 B7	SNB7
GL. EYE BOLT NUT	A194 2H	S45C
YOKE BUSH	A439 D2	FCDA NiCr
HAND WHEEL	A536	FCD450
LOCK NUT	A36	SS400
NAME PLATE	B209M	ALP

* BODY SEAT RING: STELLITE FACE
 * DISC: 12 INCH AND OVER ARE WCB WITH 13Cr FACE

Note: (1) Stem of valves 8 inch and over are non-rotating type

WEIGHT AND DIMENSIONS

Valve Size		2"	2½"	3"	4"	6"	8"	10"	12"	14"	16"
End to End (mm)	R.F. L1	267	292	318	356	444	559	622	711	800	940
	R.J. L2	283	308	333	371	460	575	638	727	816	956
Center to Top (mm)	Open Ho	380	416	444	525	668	830	992	1136	1298	1400
	Close Hc	362	394	418	490	621	770	920	1046	1298	1400
Diam. of Handwheel (mm)	W	200	250	280	355	450	560	610	685	610	610
	R.F. R.J. B.W.	25.5	47	51	84	148	230	450	650	940	1280
Weight Approx. (kg)	R.F. R.J. B.W.	28	53	57	91	187	332	500	714	987	1344
	R.F. R.J. B.W.	24	45	49	78	160	285	428	610	846	1150